



WSASEA

The
Washington
State
Association of
Student
Employment
Administrators

FALL 2015

A Message From the President

Dear Members,

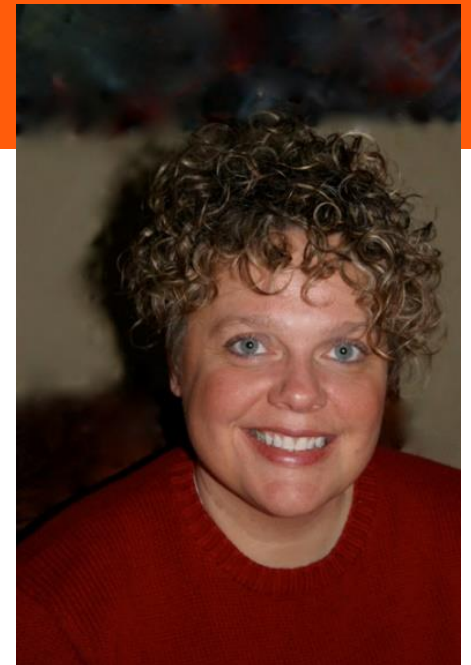
Welcome to Fall everyone! The WSASEA Board is working hard to make this year's Fall Town Meeting a great resource for everyone and we hope that many of you can make the trip to Ellensburg next month. The meeting will take place on Wednesday, October 21st from 9am to 3pm and is FREE to WSASEA members. This includes lunch, a guest speaker, and some great content provided by our fellow Student Employment professionals.

I wanted to take this opportunity to let everyone know about a new service WSASEA is offering to its members. Our past Vice President, Tommy Skaggs, worked hard to implement the WSASEA Mentors program and I am happy to announce that this program is up and running through the WSASEA website. The mentors program is a way for our members to ask specific questions one-on-one with other professionals. Please take a moment to visit the WSASEA website to view the profiles of the folks who have volunteered to be mentors.

This is the time of year when we welcome our new board members and I would like to welcome Rachel Lee as our new Vice President and Kelly Donaldson as our new Treasurer. Rachel and Kelly bring several years of Financial Aid and Student Employment experience to the organization and I am excited to work with them during the next year.

In closing, I would like to encourage you to renew your annual membership to WSASEA and ask that you spread the word about WSASEA to your fellow colleagues. This organization is an amazing resource for anyone who works in Student Employment / Financial Aid and our annual Spring Conference at the beautiful Rainbow Lodge in North Bend, WA is just around the corner. You are welcome to email me with any ideas for topics or if you would like to be a presenter at the conference. We are always looking for folks who are willing to share their experience with our members.

I am looking forward to working with all of you and hope to see you at Fall Town!



Sincerely,

Julie Anderson
WSASEA President
2015-2016

2015 Fall Town Meeting

When and Where:

Wednesday, October 21st, 9am-3pm
Central Washington University
Student Union and Recreation Center
Room 201

Agenda:

- 9:00am – 9:30am:**
Arrival and Networking
- 9:30am – 9:45am:**
Call to order and Housekeeping
- 9:45am – 10:30am:**
WSAC Update
- 10:30am – 12:30pm:**
Guest Speaker – Jenna Hyatt
- 12:30pm – 1:15pm:**
Lunch – Pizza, salad, and drinks
provided by WSASEA
- 1:15pm-1:50pm:**
Business Meeting – Secretary and
Treasurer Reports
- 1:50pm-2:00pm**
5 minute stretch
- 2:00pm-3:00pm**
Roundtable discussion, JLD



PLEASE RSVP!

Free parking passes will be granted to Fall Town Meeting attendees this year and because of this, we need to know exactly who is attending.

If you plan on attending this fantastic event, please RSVP using the contact information below.

We look forward to seeing you there!

Kelly Donaldson, Treasurer
KDonaldson@EverettCC.edu

Guest Speaker – Jenna Hyatt

Jenna Hyatt Teaches at CWU within the Master's program for Higher Education and has co-authored a chapter within a six book series for the Association of College and University Housing Officers. The majority of her work at CWU is focused on the First Year Experience and transition of students coupled with retention strategies and university strategic priorities related to student

trends. Jenna's topic for the Fall Town meeting will be: *Generation Divide? Silent Generation through Generation X, Y, and Z...Alpha?*

How do we work to understand generational

characteristics, the impact on generations that define them, and the differences in the work place? What are the generations at play within the university, or departments? There is merit in understanding the generations to work even more effectively together.

This presentation will give you an insight to how the current generation of student employees think and act and how best to motivate and inspire them.



Guest Speaker Jenna Hyatt

WSASEA Spring Elections!

We will hold executive board elections once again this spring for the following positions:

- **President-Elect**
- **Secretary**
- **Member-at-Large**

For more information on what each position's responsibilities entail, please visit the WSASEA website, then click on Executive Board and the individual position you are interested in. Get your nominations ready!

Executive Board Officers

- Julie Anderson, President**
St. Martin's University
- Michael Grosso, Past-President**
St. Martin's University
- Rachel Lee, Vice-President**
Peninsula College
- Annette Clark, Secretary**
Eastern Washington University
- Kelly Donaldson, Treasurer**
Everett Community College
- Jessie Payne, Member-At-Large & Webmaster**
Western Washington University

Benefits of Membership

Joining WSASEA is an excellent way to share expertise and information with and obtain instruction and support from other student employment administration colleagues across the state.

As a member, you will have access to networking opportunities with administrators from all institutional types, a forum to discuss the problems and issues related to student employment, our mentorship program, as well as our annual spring conference. Please visit www.WSASEA.org and join us!